




MAY  
2023



# New parent's information



European School Brussel II





## EEB2 Woluwe Nursery, primary and secondary



## EEB2 Evere Nursery and primary

Central Enrolment Commission

Expansion due to growth in the Brussels schools population.

# Management team



**Kamila MALIK**

- Director EEB2



**Isabelle WERWILGHEN**

- Deputy Director
- Secondary



**Kirsten MEEUS**

- Assistant Deputy Director
- Secondary



**Donal CREGAN**

- Deputy Director
- Nursery & Primary WOL



**Dré VAN GEEL**

- Assistant Deputy Director
- Nursery & Primary WOL



**Myriam LANCELOT**

- Deputy Director
- Nursery & Primary EVE



**Noel ROWLAND**

- Assistant Deputy Director
- Nursery & Primary EVE

# School's structure

	Age	Classes
Nursery	4-6 years	Mixed groups
Primary	6-11 years	Classes P1-P5
Secondary	11-18 years	Classes S1-S7



# Language sections



	9 sections	Woluwé	Evere
DE	German-speaking section	√	√
EN	English-speaking section	√	√
FI	Finnish section	√	
FR	French-speaking section	√	√
IT	Italian section	√	√
LT	Lithuanian section	√	
NL	Dutch-speaking section	√	
PT	Portuguese section	√	
SV	Swedish section	√	

# Choice of section

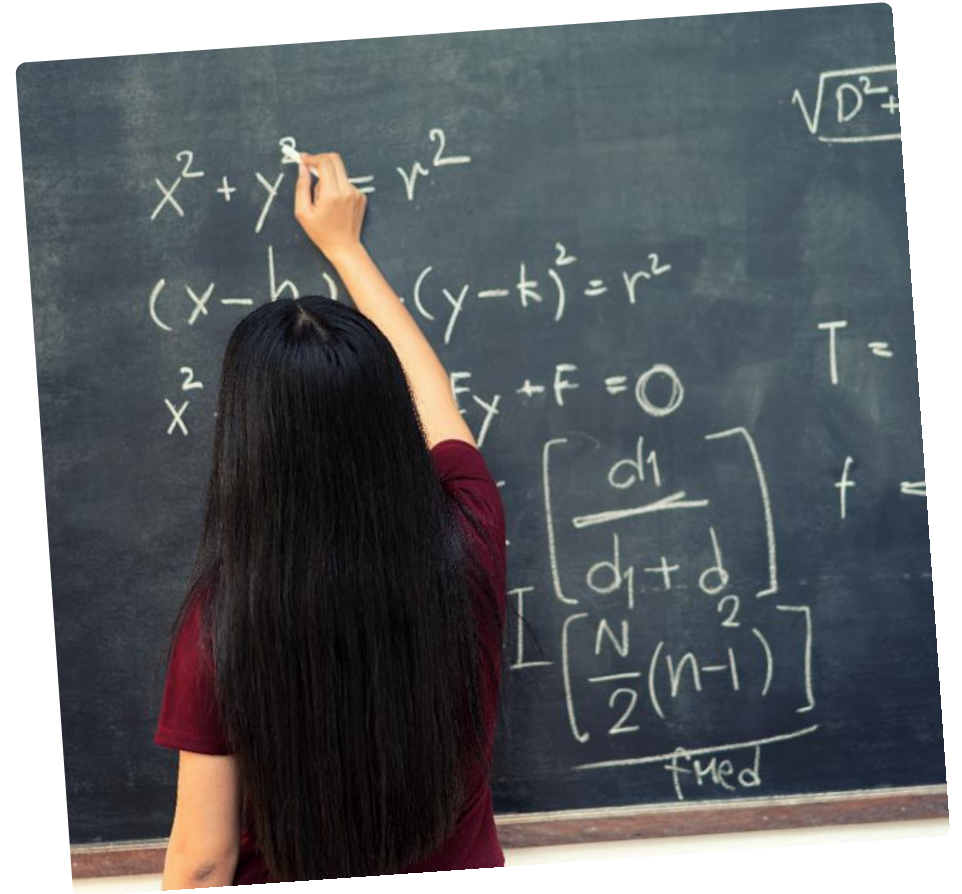
Education in the mother tongue or dominant language

Based on the pupil's background and the parents' ability to support the child in the language of the section



# Number of pupils

	Woluwé	Evere
Nursery	+/- 160	+/- 160
Primary	+/- 1060	+/- 340
Secondary	+/- 2100	



# Canteen & transport

Canteen & Transport organized by the Parents' association (APEEE)





# Medical service

School doctor

3 nurses in Woluwé,  
1 nurse in Evere

Medical interventions

Regular medical check-up



# Educational support

- General
- Moderate
- Intensive

[More info](#)

In cooperation with parents



# Pupils' well-being

## Primary

- Care Team
- School Psychologist
- Living together & Quiet Room project

## Secondary

- Guidance Team
- School psychologists
- 8 life skills
- Learn to plan projects
- Social skills



# Projects / Events

**Book Week**

Art exhibition

**Eco-project**

Footfest

**Workshops**

**School trips**

**School garden**

Sports day

**Subject-related outings**

Grand Debates

School concerts

**And many others !**



# School Libraries

Books in all section languages

## Primary

- Weekly visits
- Several activities during the year



## Secondary

- Multimedia center
- Copy options
- Free entrance during free periods
- Silent study room



# Nursery school

## EARLY LEARNING CURRICULUM

- Me and my body
- Me as a person
- Me and the others
- Me and the world





Primary school

Woluwe - Evere



# Subjects

- Mathematics
- L1
- L2
- Discovery of the World
- European Hours (from P3)
- Sport
- Music
- Art
- Ethics/Religion





# L1 programmes

Based on programme developments in the home country;  
national inspectors;  
ES curriculum;  
[www.eursc.eu](http://www.eursc.eu)

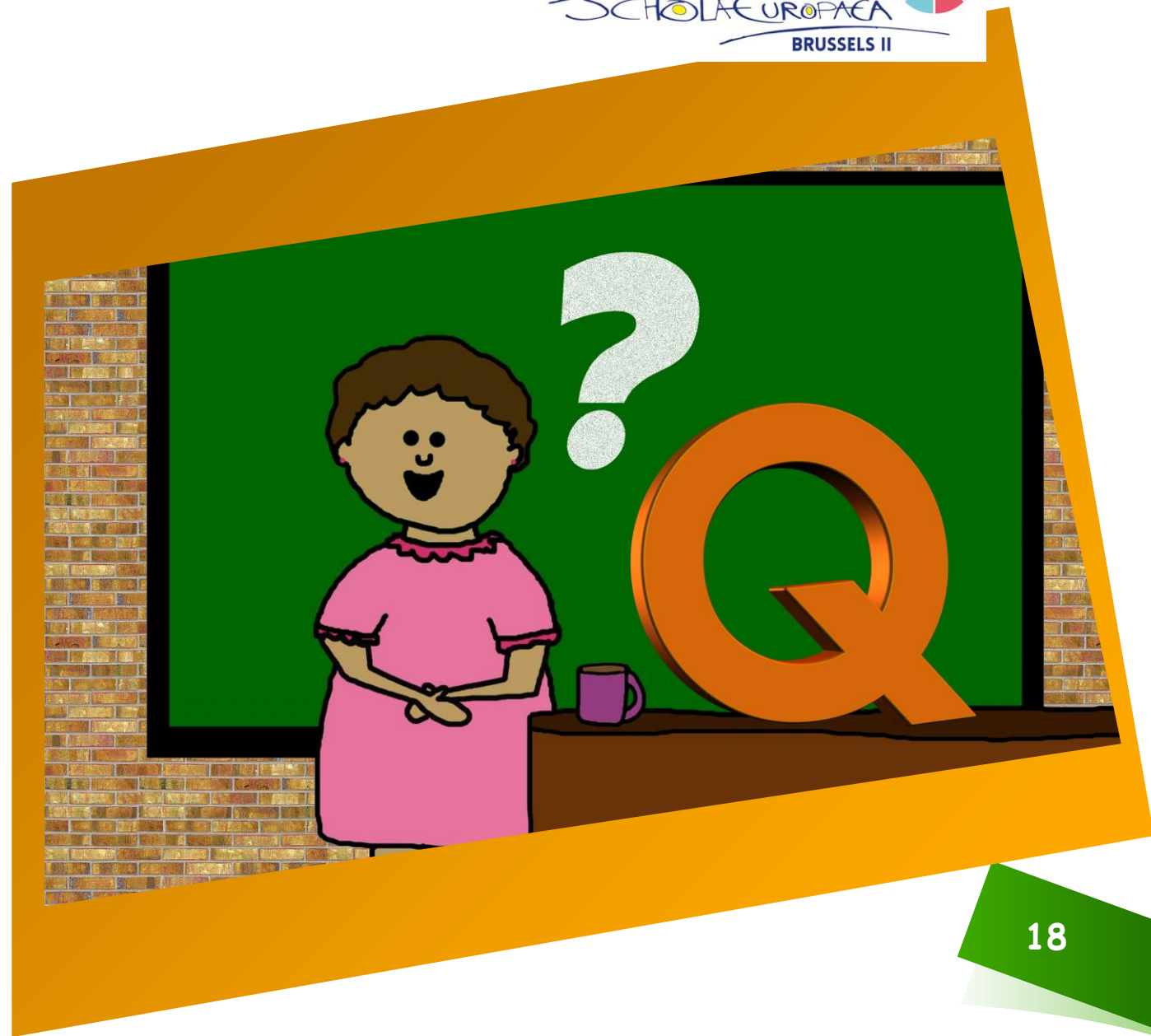


# Choice of L2

## French, English or German

Important for the future (secondary).  
Choice is definitive.

Parents' ability to support the learning

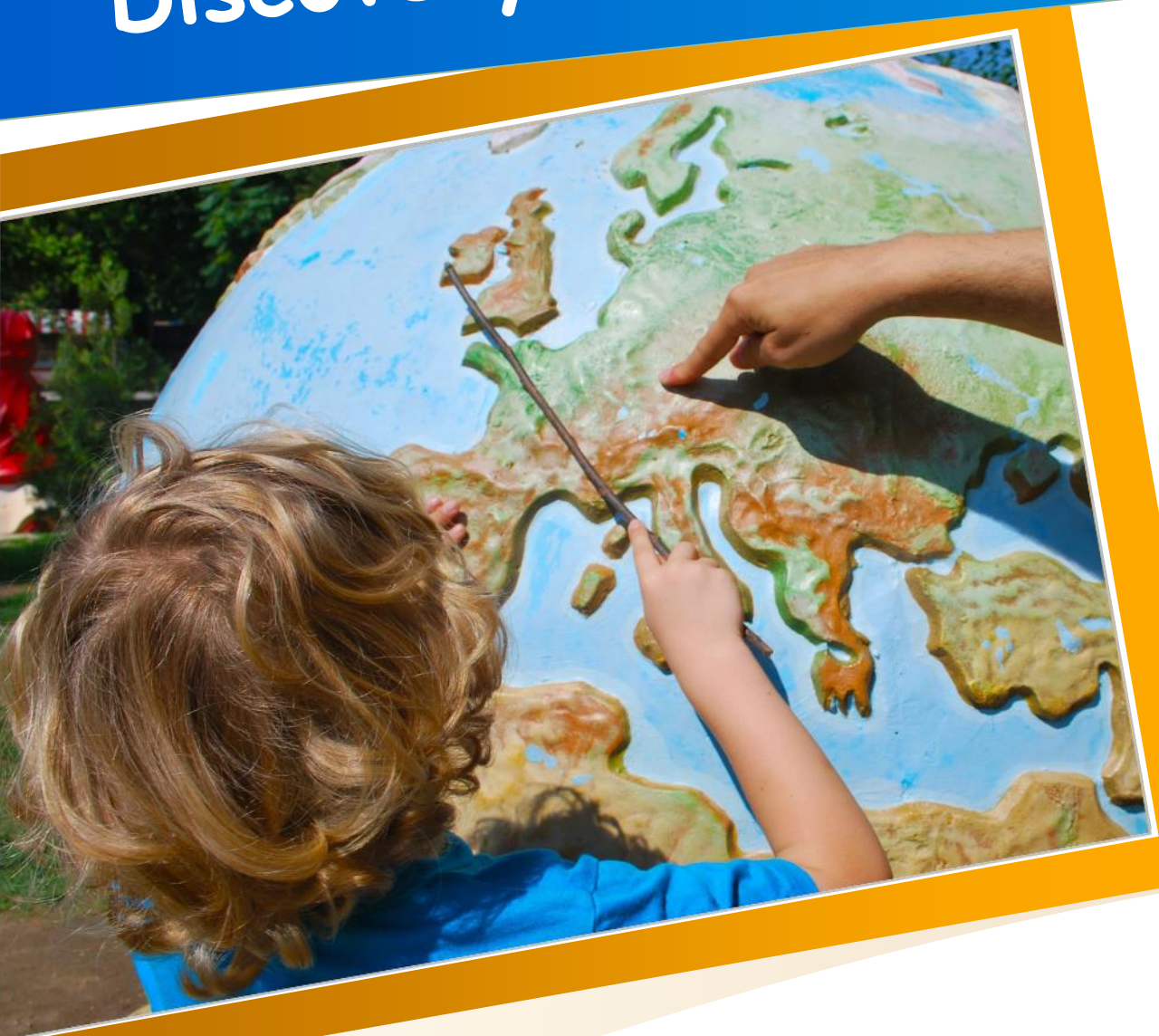


# Mathematics

- Harmonised syllabus across the sections
- Harmonised material: Intermath
- Matific



# Discovery of the world



- Harmonised syllabus
- Common daily school trips related to the syllabus
- Cooperation between sections

# European Hours



- 90 minutes per week (P3, P4, P5)
- Organised in the second language
- Different activities in rotation system

# Sport

- Sport in school (Nursery, P1-P2)
- Sport in Woluwe Sport – NATO facilities (P3-P4-P5)
- Swimming (WOL P1-P2, EVE P1-P5)
- Specialised sport / swimming teachers



# Religion / Moral



- Choice of a Religion / Moral group
- Organised in the section language if at least 7 pupils

# Assessment

- Oral school report in November
- School reports in February and July
- Portfolio
- Teacher-Parents contact





# Transition

Nursery – Primary

Primary – Secondary

Mr. Fabio Russo, Transition Coordinator Primary –  
Secondary

Different activities for a good  
transition





# Secondary school

Woluwe

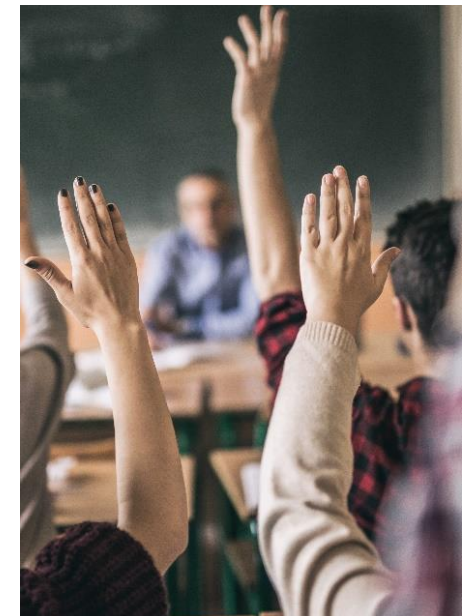
# Timetables

- From 8:30 - 16:10 (9th period)
- Wednesdays 8:30 - 12:50 (S1 – S4)
- Number of periods per week:  
min 33 – max 35
  - ❖ 1 period = 45 minutes
  - ❖ One break of 20 min. (10:55 – 11:15)
  - ❖ Lunch time (12:05 – 13:40)

MON HORAIRE / MY TIMETABLE		Lundi Monday	Mardi Tuesday	Mercredi Wednesday	Jeudi Thursday	Vendredi Friday
P1	8:30-9:15					
P2	9:20-10:05					
P3	10:10-10:55					
P4	11:15-12:00					
		Petite pause / Little break				
P5	12:05-12:50					
		Lunch S1-S2				
P6	12:55-13:40					
		Lunch S3-S7				
P7	13:45-14:30					
P8	14:35-15:20					
P9	15:25-16:10					

# Subjects taught in L1

Subject	Years
Mathematics	S1-S7
Human Sciences	S1-S2
Integrated Science	S1-S3
BIO, CHE, PHY	S4-S5
ICT / Religion / Ethics	S1-S2



# Importance of L2

Subject	Years
Human Sciences	From S3
Religion, Ethic	From S3
Geography	From S4
History	From S4
Economy	From S4
Sociology	From S4
...	



Pedagogical continuity of L2 from P1 to S7 (BAC, 12 years)

No changes are envisaged in language choices, except on entry to year S6.

# Introduction L3

2 periods in S1: This is a **beginner's course** and the choice is made in P5.

A minimum of 7 students to create a L3 course

No changes are envisaged in language choices, except on entry to year S6.

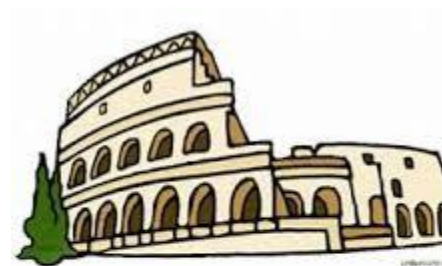
-  German
-  Italian
-  Dutch
-  French
-  Portuguese
-  Spanish
-  English
-  Another European language



# Optional subjects



Year	Subject
S1	No optional subject
S2	Latin (2 periods)
S3	ICT (if no Latin)
S4-S7	ICT, L4, L5, Eco, Latin, Music, Art, Sociology, Labs, ...
	ONL (Other National Language): Irish: for Irish students in Anglophone Sec. Finnish: for Finnish students in SV Sec. Swedish: for Swedish students in FI Sec.



LATIN



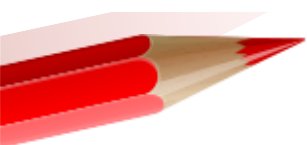
# Contact parents-school

- Website (general information brochure)
- Mail
- SMS
- Extranet
- School planner (P5 + Secondary)





# Parents' representatives



Admin Board  
Education Boards  
Health and Safety Board

[www.woluweparents.org](http://www.woluweparents.org)



APeeee Woluwe  
Evere

The central graphic features the text 'APeeee' in a large, black, handwritten-style font. To its right is a circle of seven colorful stars (blue, red, purple, green, purple, red, blue). Below the stars, the words 'Woluwe' and 'Evere' are stacked in a black, sans-serif font.



Thank You!

[www.eeb2.be](http://www.eeb2.be)  
[www.eurisc.eu](http://www.eurisc.eu)  
[www.woluweparents.org](http://www.woluweparents.org)